

CIVIA PIZZERIA RACK: FRONT RACK INSTALLATION

These instructions will show how to successfully install CIVIA Pizzeria aftermarket front racks.

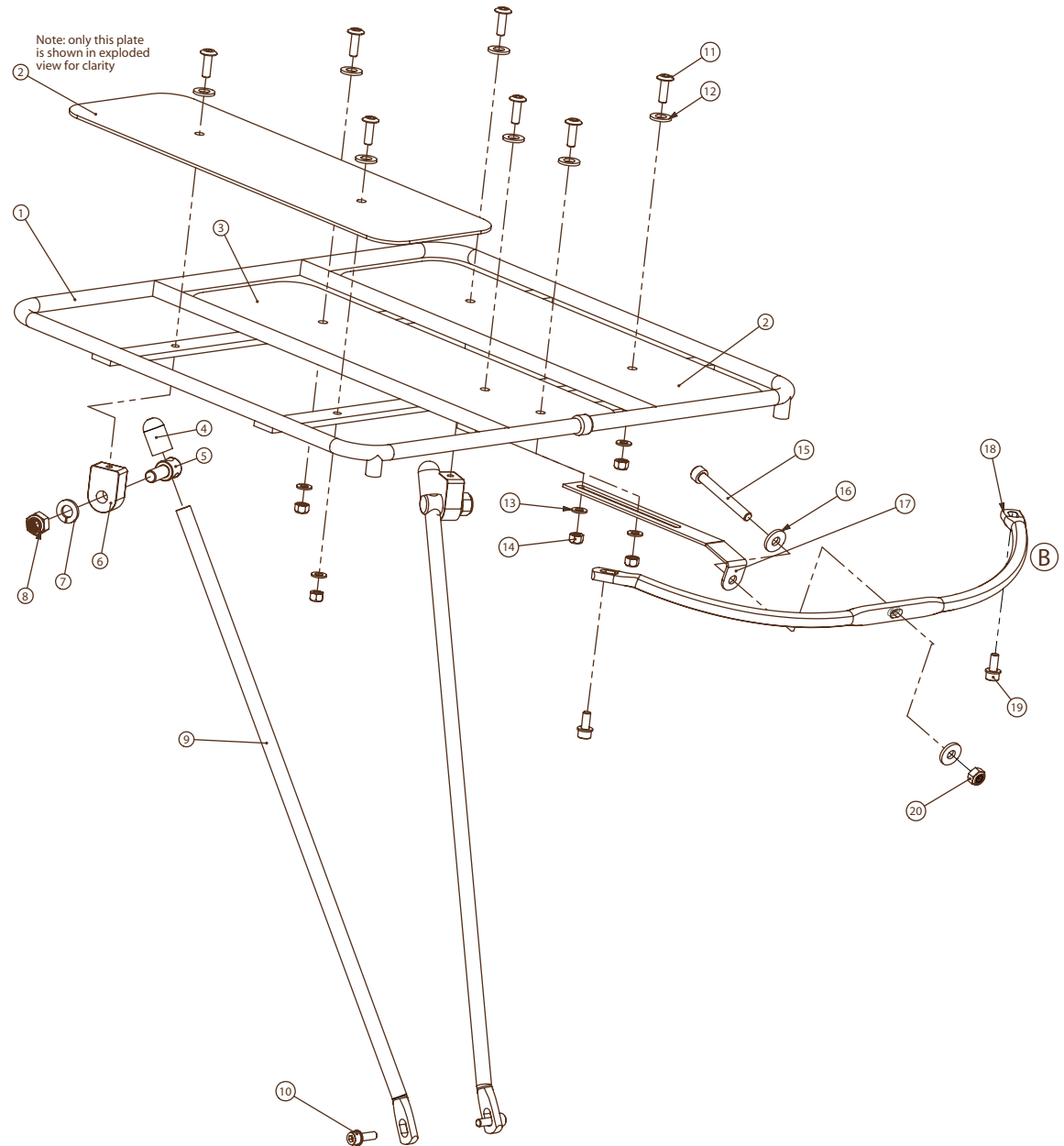
WARNING: Read these instructions completely before beginning installation of this product. If you lack the knowledge or tools to perform this installation, please have your local professional bicycle mechanic do the job. Improper installation can result in loss of control, damage to the bicycle, and/or serious injury or death to the rider.

Required tools: 4 and 5mm hex wrenches
8, 10 and 13mm box-end wrenches

NOTE: For aftermarket racks, a hacksaw, cutting guide and file may be required to shorten rack stays.

PARTS LIST

Item No.	Description	Quantity
01.	Pizzeria rack deck	1
02.	Aluminum base plate - 2 holes	2
03.	Aluminum base plate - 3 holes	1
04.	End cap	2
05.	Swivel bolt	2
06.	Swivel mount	2
07.	Split lockwasher	2
08.	Stainless steel nut with nylon locking insert	2
09.	Rack stay	2
10.	M5 bolt / pre-applied thread locking agent	2
11.	M5 bolt (5 x 0.8 x 16mm)	7
12.	M5 washer (14mm OD, 7.4mm ID, 1.2mm thick)	7
13.	M5 washer (10mm OD, 5.3mm ID, 1mm thick)	5
14.	M5 nut	5
15.	M6 x 45mm bolt	1
16.	M6 washer (16mm OD, 6.4mm ID, 2mm thick)	2
17.	Front brace	1
18.	Rear brace	1
19.	M5 bolt	2
20.	M6 nut with nylon locking insert	1



CIVIA PIZZERIA RACK: FRONT RACK INSTALLATION

STEP 1

Install rack stays

- Tools: 4mm hex, 8 & 13mm box-end wrenches
- Remove the two 8mm nuts from the bottom-front corners of the rack deck (Fig. 1)
- Swap out the nuts with the swivel mount assembly attached to the rack stays (Fig. 2)
- Snug the bolts, but don't tighten them all the way



Pizzeria Rack and Hardware



Figure 1

STEP 2

Install front and rear braces

- Tools: 4 & 5mm hex, 10mm box-end wrenches
- Starting from the rear of the fork, assemble the M6 x 45mm bolt, washer and rear brace. Continuing on the front of the fork, assemble the front brace, washer and nut (Fig. 3 & 4). Again, snug the bolts, but don't tighten fully



Figure 2



Figure 3



Figure 4

CIVIA PIZZERIA RACK: FRONT RACK INSTALLATION

STEP 3

Mount the rack

- Tools: 4mm hex, 8mm box-end wrenches
- Place the rack on the braces. Install the M5 bolts through the rear brace into rack (Fig. 5)
- Mount the rack stays to the mid-blade fork mounts with M5 bolts (Fig. 6)
- Remove the 8mm hex nuts and washers from the two center rack bolts (Fig 8)
- Insert M5 bolts and washers through the top of the rack and the front brace, then replace the washers and nuts (Fig. 8)

STEP 4:

Finish installation

- Make sure the rack is level from front to back, and side to side (Figure 9)
- Fully tighten down all the rack bolts and nuts
- Load up your bike and go for a ride

WARNING: The Pizzeria rack is designed to carry up to 22 lb (10kg). Do not exceed the load capacity. The Pizzeria Rack is not designed to carry pets or passengers. Always properly secure your cargo before riding.

Civia Cycles Limited 2-Year Warranty

This product is warranted against defects in materials and workmanship only, for two years from the original date of retail purchase by the consumer, subject to the limitations detailed below. This warranty is expressly limited to the repair or replacement of the original product, at the option of Civia Cycles, and is the sole remedy of this warranty. This limited warranty applies only to the original purchaser of this product and is not transferable. In no event shall Civia Cycles be liable for loss, inconvenience or damage, whether direct, incidental, or otherwise resulting from breach of any express or implied warranty or condition, of respect to this product except as set forth herein.

This warranty does not cover the following:

- Damage due to improper assembly or follow-up maintenance or lack of skill, competence, or experience of user
- Products that have been modified, neglected, used in competition or for commercial purposes, misused or abused, involved in accidents or anything other than normal use
- Damage or deterioration to the surface finish, aesthetics, or appearance of the product
- Normal wear and tear
- Labor required to remove and/or refit and re-adjust the product within the bicycle assembly

This warranty gives the consumer specific legal rights, and those rights and other rights may vary from state to state.



Figure 5



Figure 6



Figure 7



Figure 8



Figure 9